



IT DEPARTMENT

BYOD iPad Enrolment Guide

Grade 5

© Clifton Springs Primary School
80-118 Jetty Rd
Clifton Springs, VIC 3222
Phone (03) 5251 3581

Table of Contents

Prerequisites: 3


To Enrol: 3



Prerequisites:

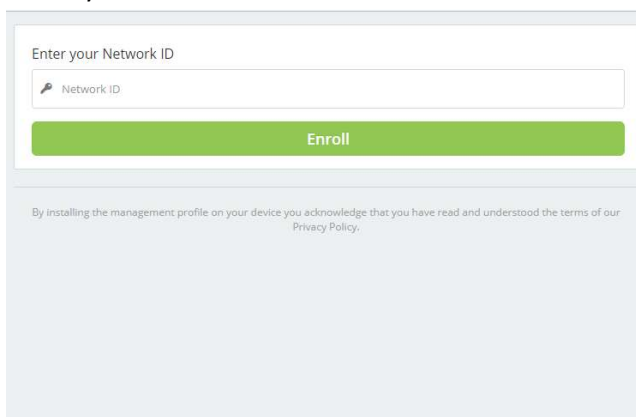
1. Internet Connection (iPad connected to Wi-Fi)
2. Know your Passcode

To Enrol:

1. Scan the QR code (left) with your Camera app or Navigate to manage.zuludesk.com/enroll using **Safari APP** 

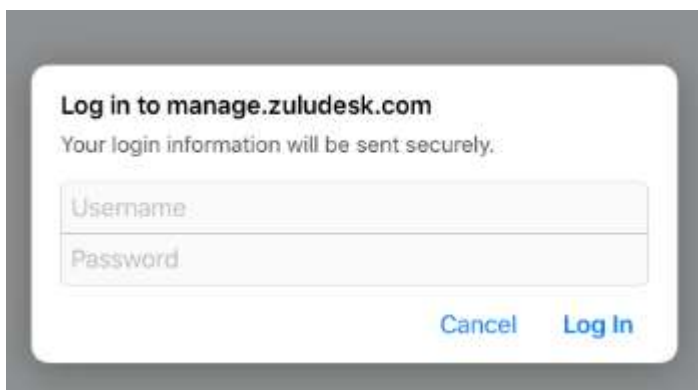


2. Enter your Network ID: **59182940**

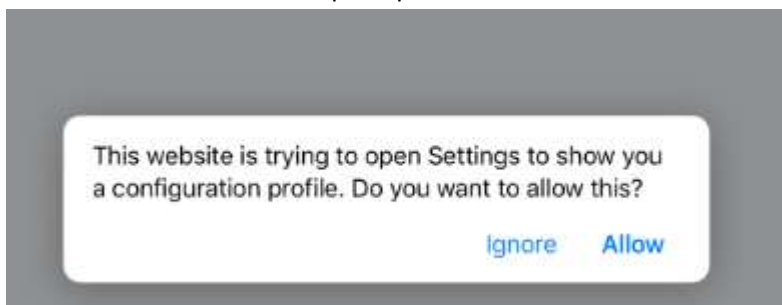
A screenshot of a web form titled "Enter your Network ID". It features a text input field with a magnifying glass icon and the placeholder text "Network ID". Below the input field is a prominent green button labeled "Enroll". At the bottom of the form, there is a small line of text: "By installing the management profile on your device you acknowledge that you have read and understood the terms of our Privacy Policy."

3. Press 'Enroll'

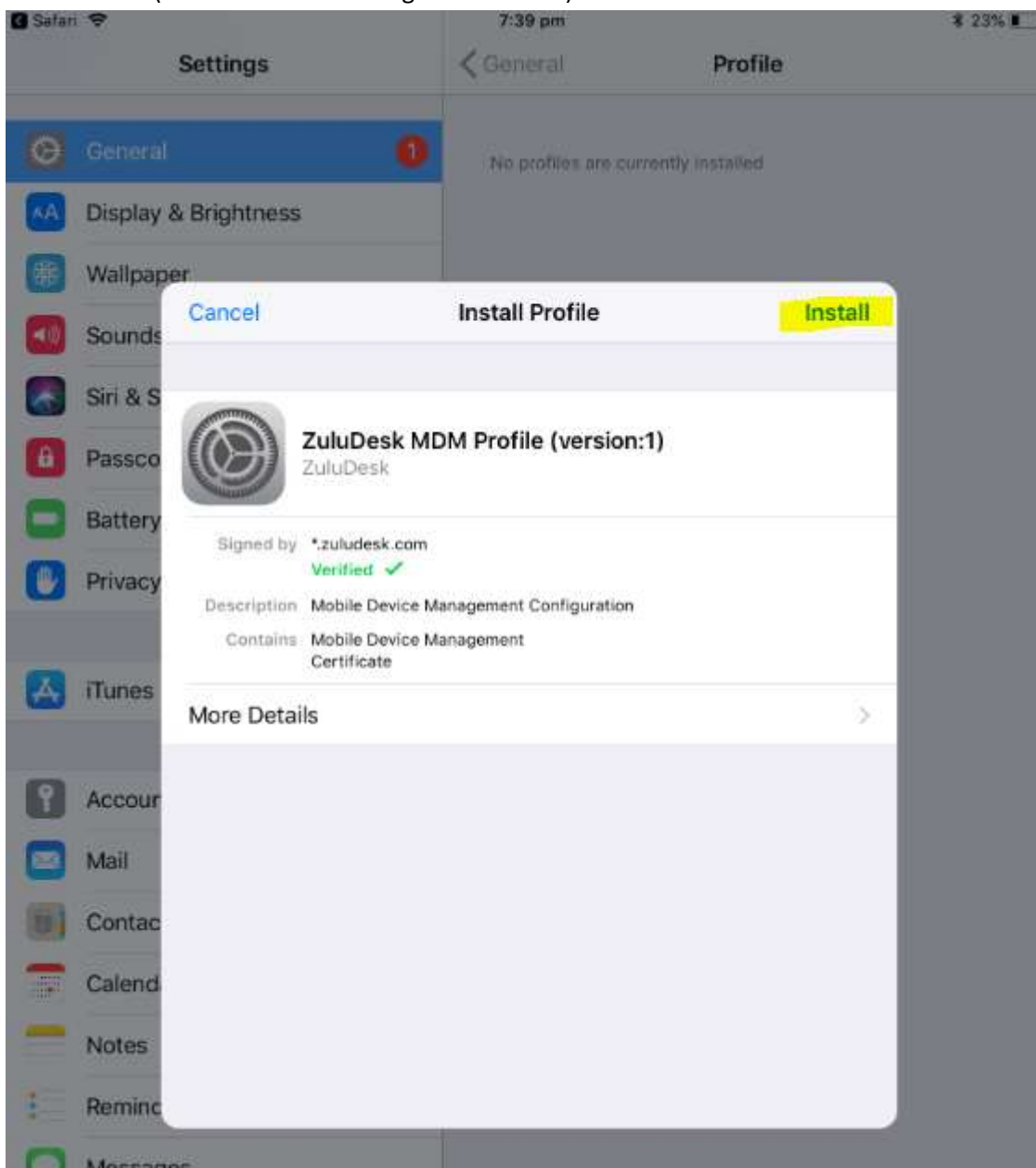
4. Enter the following Username and Password at the Login Prompt and select **Log In**:
Username: 2021
Password: 2021

A screenshot of a login prompt for "manage.zuludesk.com". The prompt includes the text "Log in to manage.zuludesk.com" and "Your login information will be sent securely.". Below this text are two input fields: "Username" and "Password". At the bottom right of the prompt are two buttons: "Cancel" and "Log In".

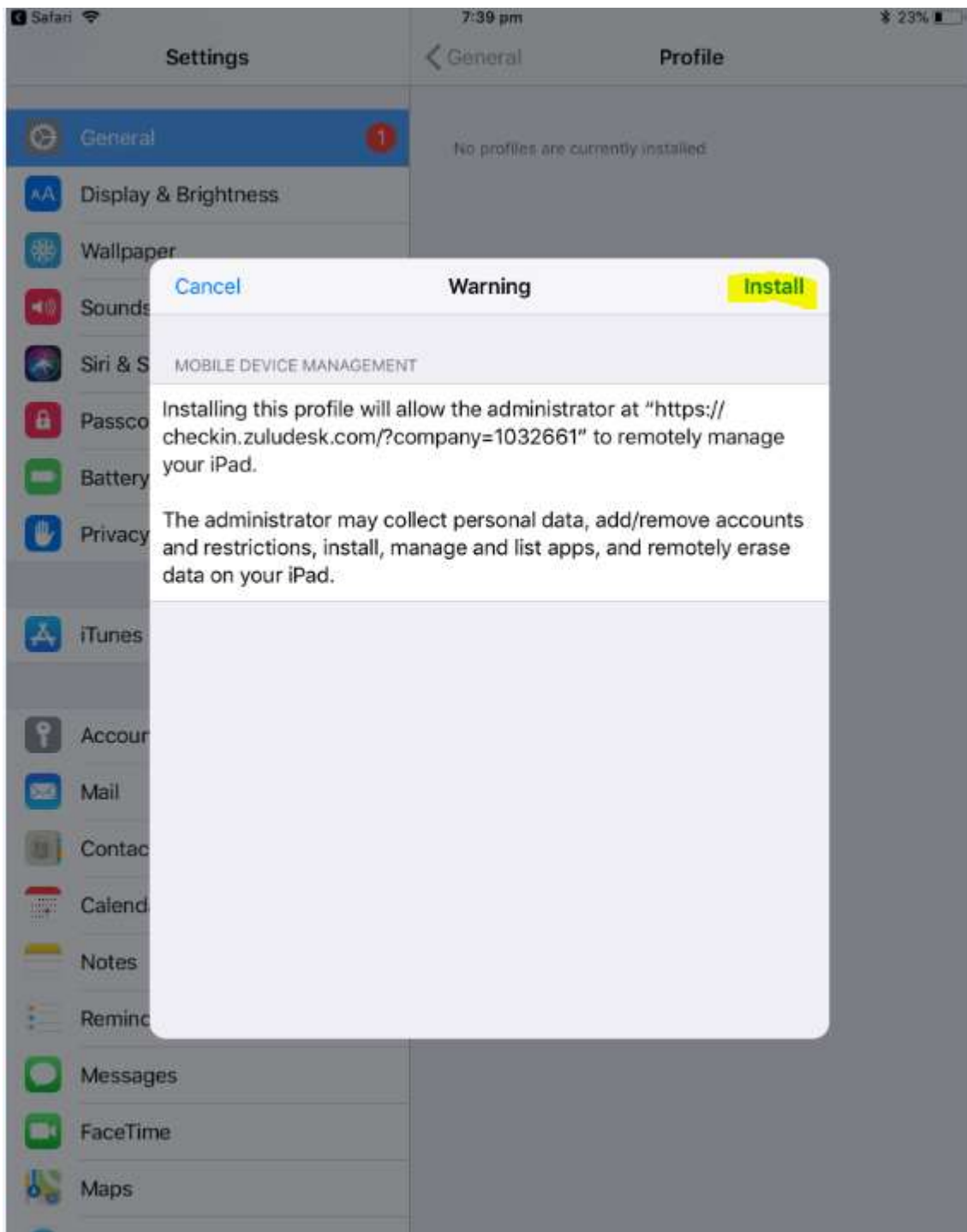
5. Select **Allow** on the below prompt



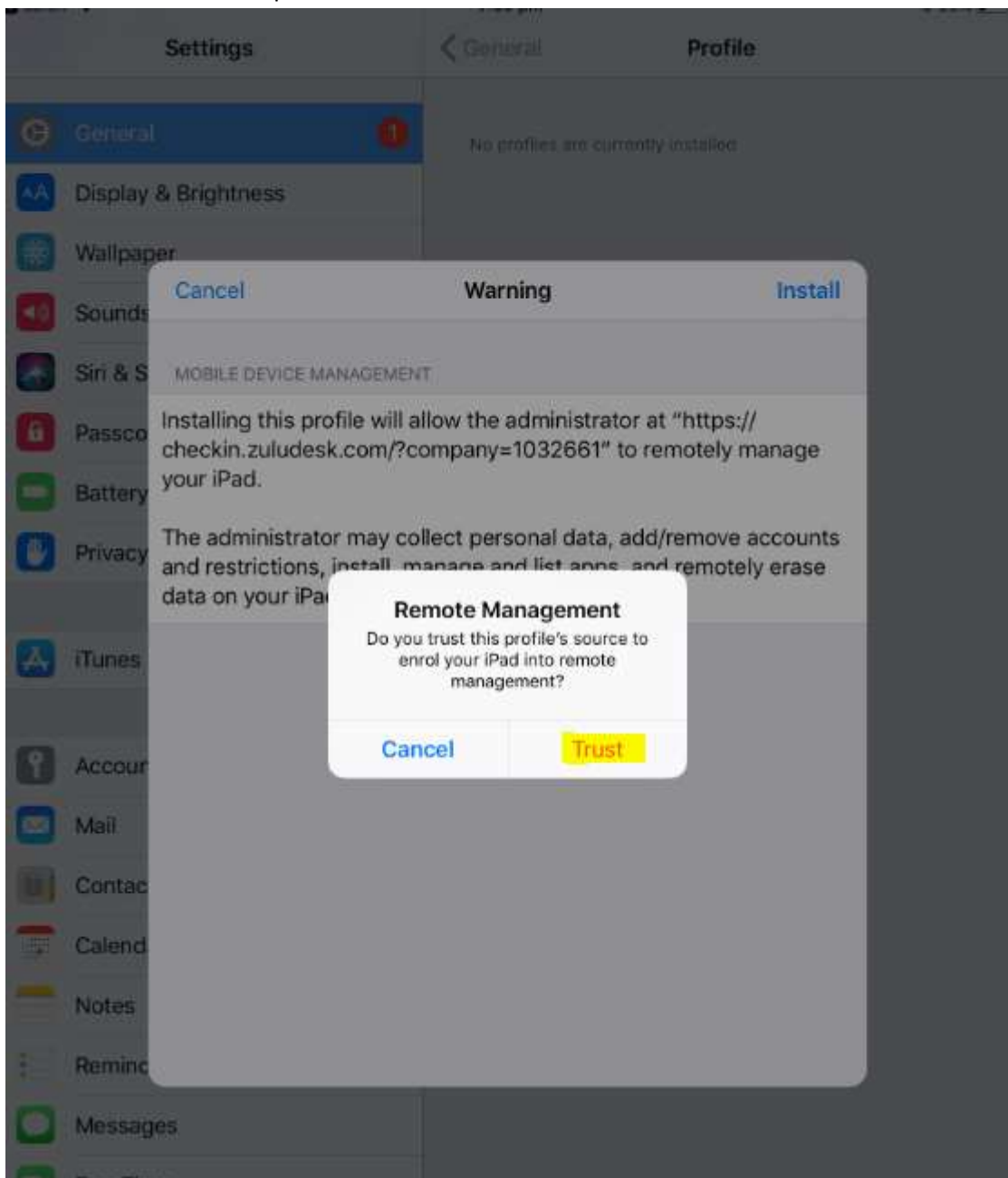
6. Select **Install** (This installs the Management Profile)



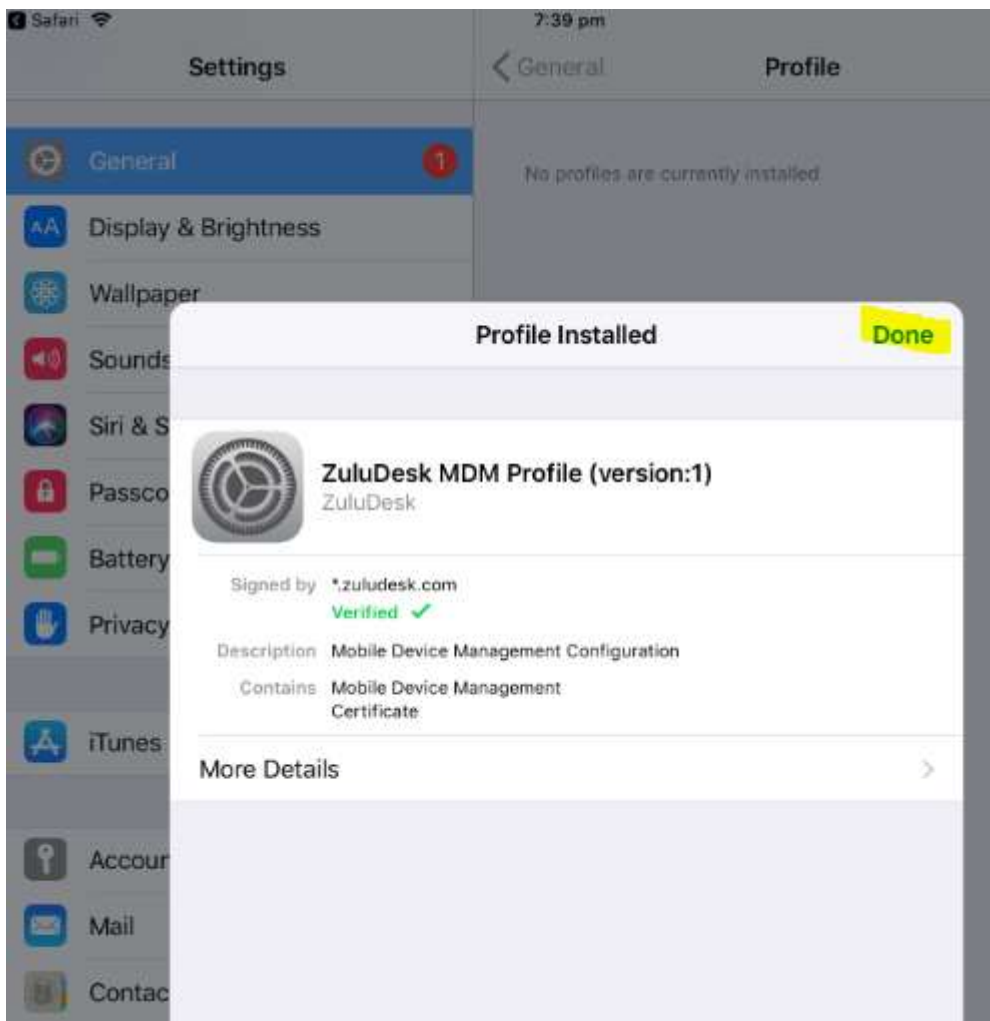
7. Select **Install** on the Warning Prompt



8. Select **Trust** on the Prompt



9. Select Done



10. The following window should appear, Confirming you have **Successfully Enrolled** your Device. Clifton Springs Primary School can now distribute APPS and Digital Content to your iPad.

